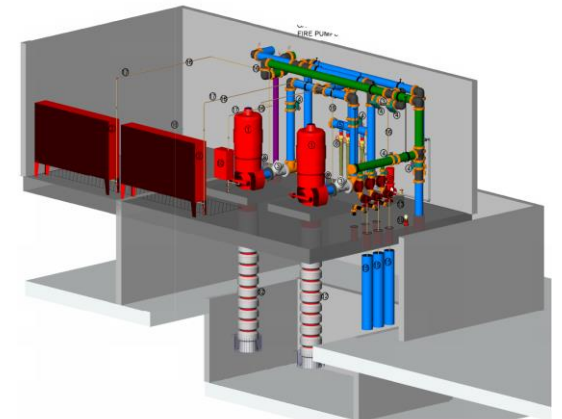
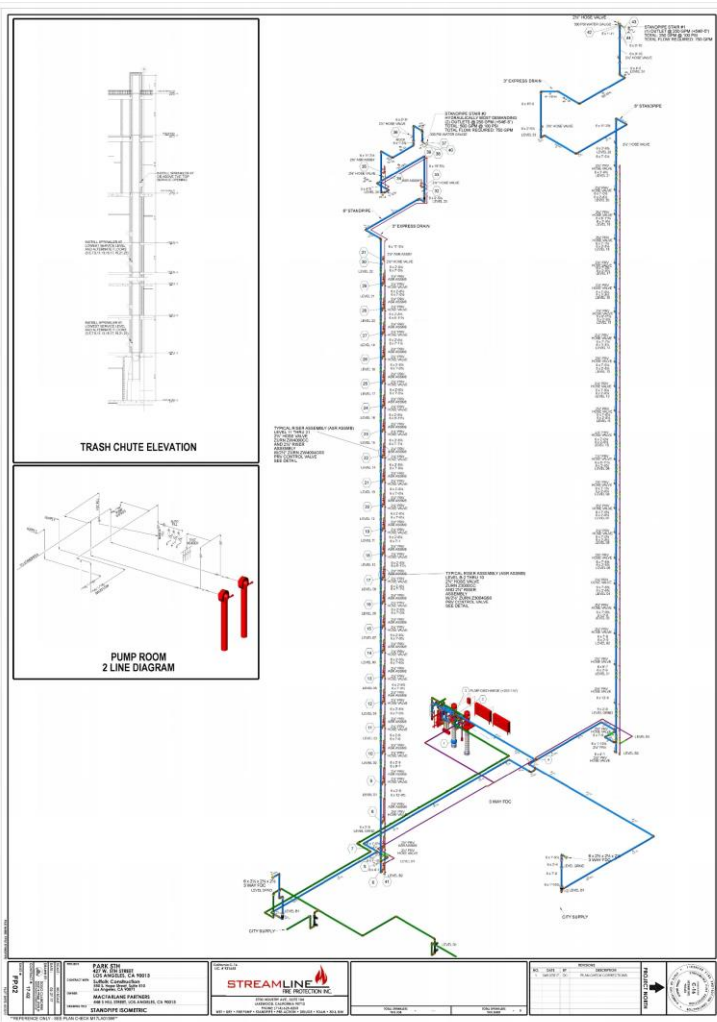


PARK 5TH



PARK 5TH IS A 25 STORY RESIDENTIAL TOWER OFFERING 347 NEW UNITS AT THE CORNER OF 5TH AND OLIVE IN DTLA. BIM COORDINATED PROJECT UTILIZING BIM 360 GLUE. THERE WERE UNIQUE DESIGN REQUIREMENTS FOR THIS PROJECT DUE TO IT'S CLOSE PROXIMITY TO ADJACENT BUILDING REQUIRING OPENING PROTECTION.

FIRE PUMPS: 2 TOTAL – VERTICAL TURBINE PUMPS 750 GPM @ 245 PSI

PROJECT TCO: 2018 TOTAL SQ.FT.: 460,000 TOTAL HEADS ON PROJECT: 5,415